



What will I be learning?

Cartography is the study and practice of making maps.

Maps present information about the world in a simple, visual way. They teach about the world by showing sizes and shapes of countries, locations of features, and distances between places. Maps can show distributions of things over the Earth, such as rural and urban settlement patterns (Human geography) and the size and placement of rivers and mountains (Physical geography).

Maps often contain **symbols** or pictures. These **symbols** or images are listed and explained in a key on the **map**. **Symbols** are used to keep the **map** tidy and easy to read, too many words would make the **map** difficult to read.

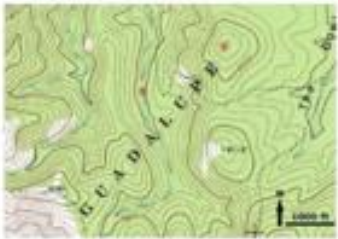
Height of Land

Height on maps are shown as metres above sea level

Name	Description
layer shading	Colours and a key are used to show the height of the land.
spot heights	Shows the exact height of a place.
contour lines	Lines on a map which join up places of the same height.

Topographic map


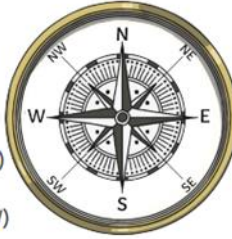
Ordnance Survey map



Key Vocabulary

The compass is used for navigation, location and direction. People use it to find their way.

Compass Points

Four-Point Compass	Eight-Point Compass
N - north E - east S - south W - west	  north (N) north east (NE) east (E) south east (SE) south (S) south west (SW) west (W) north West (NW)

longitude	geographic coordinate that specifies the east-west position
latitude	geographic coordinate that specifies the north-south position
Ordnance Survey map	Britain's mapping agency create up to date and accurate maps depicting the landscape's human and physical features.
topography	Topography is the study of the shape and features of land surfaces.
Compass	an instrument used for navigation
Mountain	a large natural elevation of the earth's surface rising abruptly from the surrounding level
River	a large natural stream of water flowing in a channel to the sea
Locality	an area or neighbourhood.

Try it at home... Draw a map showing the direction to school. Add details using the mapping symbols.

Learning links <https://www.bbc.co.uk/bitesize/topics/zvsfr82>